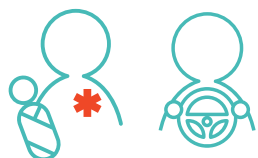




In 2016, there were 5,859 staff, spread across 5,249 FTEs.

5,859 ●



The national average inflow percentage in 2016 was 8.6%.

8.6% ●



The national average outflow percentage in 2016 was 6.1%.

6.1% ●

Work perception of ambulance care staff

Since 2015, RAVs have frequently been investigating how ambulance staff experience their work. Thirteen ambulance organisations took part with a 73.3% response. Effectory carried out the survey and the results of the ambulance sector can be compared with those of the A&E sector and the Care sector. The ambulance sector achieved the highest score regarding almost all themes.

Enthusiasm



7.9 ●

Resistance to staff turnover



8.6 ●

Involvement



7.3 ●

Role demarcation



8.0 ●

Satisfaction



7.1 ●

Employment practice



7.6 ●

For more information, go to:

<https://www.ambulancezorg.nl/sectorkompas/ambulancezorgverlenners-in-2016>

Source: 'Inzicht in de werkbeleving van ambulancezorgmedewerkers', Effectory, 2017

